

WeatherNet Limited

Kingsland House 21 Hinton Road Bournemouth BH1 2DE
Telephone 01202 296396 Facsimile 01202 314064



XXXXXXXX XXXXX
XXXXXXXXXX
XXX
XX XXXX XXXXXX
XXXXXXXX
XX XXX

Tel: (XXXX) XXX XXXX
Fax: (XXXX) XXX XXXX

Direct Dial: 01202 293867
E-mail rick@weathernet.co.uk
Web Site: www.weathernet.co.uk
Linkedin: www.linkedin.com/in/drrichardwild

6th July 2018

Dear XXXXXXX,

Incident

Location: Glasgow (G13 1AX)
Time: 12:25
Date: 5th April 2018
Your Reference: XXX XXXX
My Reference: XXXX (XX)

Details of meteorological stations utilised

To establish what meteorological conditions occurred around the surrounding area of the time of the incident, I investigated what was the closest meteorological station that was operating at the time. The closest meteorological station to the incident, at which hourly meteorological data was available to me, was Glasgow, Bishopton (7.8 miles to the west). The closest meteorological station to the incident, at which daily weather data was available to me, were Glasgow, Bishopton (12.5km) and Salsburgh (28.5km). This daily meteorological data (manned and automatic weather stations) should be representative of the incident area.

Meteorological reports/documents enclosed

Hourly meteorological reports from Glasgow, Bishopton.
Daily meteorological report from Glasgow, Bishopton and Salsburgh.
Modelled UKPP data for the actual incident postcode G13 1AX

Anecdotal reports enclosed

No anecdotal reports were included.

I very much hope that the information is acceptable and please do not hesitate to call if I can be of



The Forensic Science Society



further assistance in this or in any other case in the future.

Please note that this is a Non-CPR Legal Weather Report, and this report can not be used as evidence in a court of law as this incident has not be fully researched and only shows a snap shot of the raw daily or hourly data in the surrounding area of the incident. No interpretation, conclusion and statement of truth etc. have been included. If later you require a CPR Legal Weather Report (for potential court purposes) for this case, please contact me at the above address.

Kind regards

Yours sincerely

Dr Richard J. Wild BSc (Hons) PhD FRMetS FRGS MAE M
Chief Meteorologist, WeatherNet Limited

Enc.:

Weather report with respect to the case at Glasgow (G13 1AX) on the 20th April 2019

Sample



The Forensic Science Society

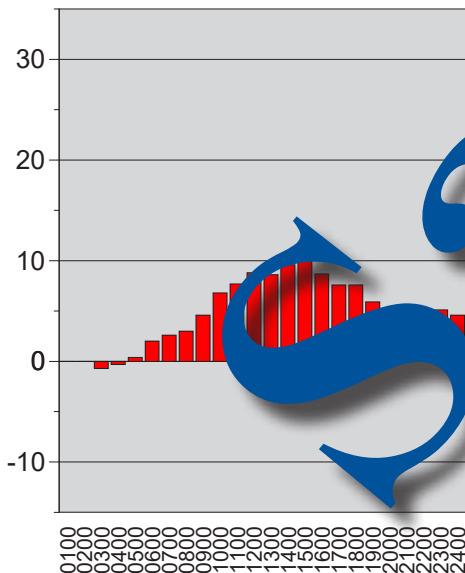


**Weather at Glasgow, Bishopton (59m ASL) 7.8 miles W of G13 1AX (30m ASL)
Thursday 05 April 2018**

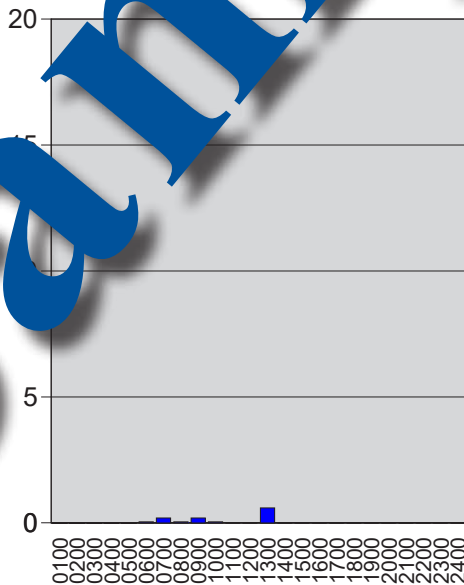
GMT	Air Temp	Humidity	Rain	Visibility	Sun	Cloud Cover	Wind From	Mean Wind	Max Gust	Weather
0100	0.0°C	83.8%	0.0mm	50km	0hr	0%	340°	6kt	12kt	None
0200	0.0°C	79.6%	0.0mm	50km	0hr	0%	330°	6kt	12kt	None
0300	-0.7°C	85%	0.0mm	45km	0hr	12.5%	310°	4kt	7kt	None
0400	-0.3°C	85.7%	0.0mm	35km	0hr	37.5%	270°	4kt	9kt	None
0500	0.4°C	83.3%	0.0mm	40km	0hr	87.5%	270°	2kt	4kt	None
0600	2.0°C	87.2%	0.05mm	40km	0hr	12.5%	260°	6kt	12kt	Rain
0700	2.6°C	88.5%	0.2mm	50km	0.2hr	50%	250°	7kt	15kt	Rain
0800	3.0°C	88.6%	0.05mm	6km	0.2hr	62.5%	200°	3kt	15kt	Slight-moderate precipitation
0900	4.6°C	80.9%	0.2mm	28km	0.4hr	37.5%	300°	10kt	20kt	Slight rain showers
1000	6.8°C	77.8%	0.05mm	19km	0.8hr	25%	270°	10kt	21kt	Rain
1100	7.7°C	72.1%	0.0mm	30km	1hr	0%	280°	10kt	22kt	None
1200	8.8°C	69.4%	0.0mm	27km	1hr	12.5%	240°	11kt	23kt	None
1300	8.6°C	83.7%	0.6mm	30km	0.5hr	50%	250°	7kt	14kt	Rain
1400	9.6°C	65.3%	0.0mm	22km	1hr	0%	260°	10kt	14kt	None
1500	10.2°C	58%	0.0mm	40km	1hr	12.5%	270°	9kt	15kt	None
1600	8.7°C	57.2%	0.0mm	26km	1hr	12.5%	230°	10kt	15kt	None
1700	7.6°C	56.5%	0.0mm	40km	0.2hr	87.5%	210°	15kt	15kt	None
1800	7.6°C	57.3%	0.0mm	30km	0.3hr	100%	200°	15kt	7kt	None
1900	5.9°C	65.3%	0.0mm	45km	0.2hr	87.5%	200°	4kt	15kt	None
2000	5.2°C	71.6%	0.0mm	50km	0hr	100%	150°	4kt	8kt	None
2100	4.2°C	79.7%	0.0mm	50km	0hr	100%	150°	5kt	10kt	None
2200	5.0°C	71.1%	0.0mm	50km	0hr	100%	130°	5kt	8kt	None
2300	5.1°C	71.1%	0.0mm	50km	0hr	100%	100°	5kt	13kt	None
2400	4.6°C	75.2%	0.0mm	50km	0hr	100%	100°	4kt	10kt	None

Totals			1.15mm		7.8hr					
---------------	--	--	--------	--	-------	--	--	--	--	--

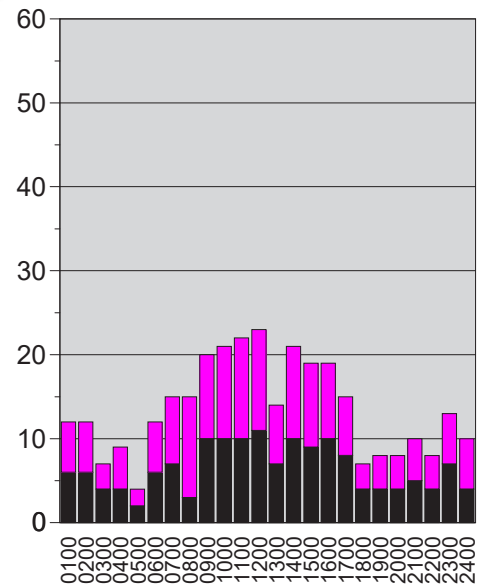
Air Temperature (°C)



Rainfall



Mean Wind & Gust (kt)



UKPP Weather Report for G13 1AX
Thursday 05 April 2018

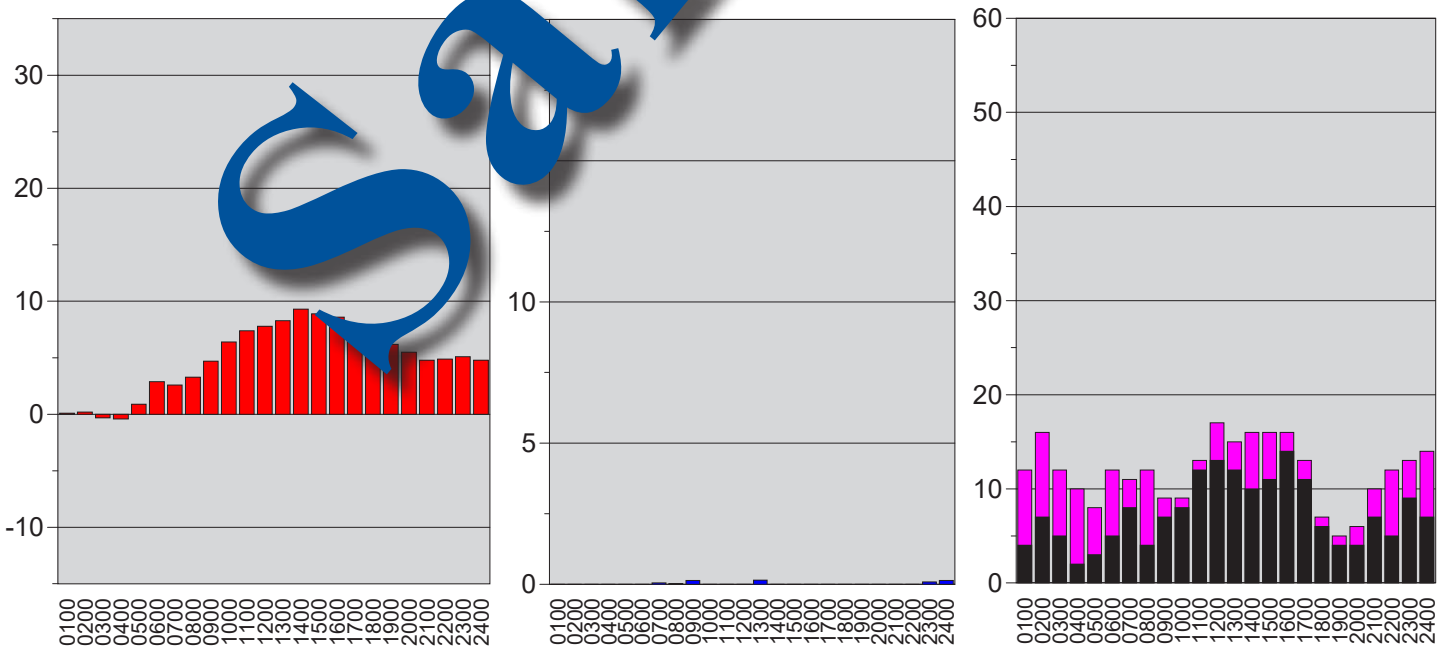
GMT	Air Temp	Humidity	Rain*	Visibility	Cloud Cover	Wind From	Mean Wind	Max Gust**	Weather Notes
0100	0.1°C	81.0%	0.0mm	40,880m	0.0%	274°	4kt	12kt	
0200	0.2°C	78.3%	0.0mm	40,256m	0.0%	283°	7kt	16kt	
0300	-0.3°C	81.5%	0.0mm	30,882m	5.0%	251°	5kt	12kt	Slight frost
0400	-0.4°C	85.6%	0.0mm	18,462m	26.3%	262°	2kt	10kt	Slight frost. Astronomical Dawn at 0319
0500	0.9°C	81.9%	0.0mm	15,588m	67.5%	239°	3kt	8kt	Nautical Dawn at 0412. Civil Dawn at 0458
0600	2.9°C	81.1%	0.0mm	14,932m	25.0%	244°	5kt	12kt	Sunrise at 0537
0700	2.6°C	87.7%	0.1mm	15,114m	48.7%	248°	8kt	11kt	
0800	3.3°C	97.6%	0.0mm	5,020m	93.8%	240°	4kt	12kt	
0900	4.7°C	81.0%	0.1mm	15,660m	65.0%	262°	7kt	9kt	Moon Set at 0816
1000	6.4°C	76.6%	0.0mm	17,836m	45.0%	219°	8kt	9kt	
1100	7.4°C	71.3%	0.0mm	17,590m	31.2%	248°	12kt	13kt	
1200	7.8°C	68.5%	0.0mm	25,558m	28.7%	233°	13kt	17kt	
1300	8.3°C	74.2%	0.1mm	23,442m	47.5%	261°	12kt	15kt	
1400	9.3°C	65.3%	0.0mm	24,632m	28.7%	238°	10kt	14kt	
1500	8.9°C	55.2%	0.0mm	28,744m	17.5%	248°	11kt	14kt	
1600	8.6°C	55.4%	0.0mm	29,118m	37.5%	243°	14kt	16kt	
1700	7.5°C	55.0%	0.0mm	31,164m	93.8%	216°	13kt	13kt	
1800	7.4°C	56.4%	0.0mm	24,890m	100.0%	208°	6kt	7kt	
1900	6.2°C	61.2%	0.0mm	19,630m	93.8%	166°	4kt	6kt	
2000	5.5°C	65.6%	0.0mm	19,548m	100.0%	158°	6kt	6kt	Sunset at 1903. Civil Dusk at 1943
2100	4.8°C	70.3%	0.0mm	21,422m	100.0%	139°	7kt	10kt	Nautical Dusk at 2029
2200	4.9°C	68.9%	0.0mm	25,644m	100.0%	095°	5kt	6kt	Astronomical Dusk at 2123
2300	5.1°C	68.2%	0.1mm	12,324m	100.0%	095°	9kt	8kt	
2400	4.8°C	72.1%	0.1mm	10,906m	100.0%	152°	7kt	14kt	

Totals			0.6mm						
---------------	--	--	-------	--	--	--	--	--	--

Air Temperature (°C)

Rainfall (mm)

Mean Wind & Gust (kt)



*Rainfall & lightning is available from 26/02/2016; **Wind gusts are available from 13/04/2016

**Weather for 30km around G13 1AX
04/04/2018 - 06/04/2018**

Wed 04 Apr 2018	Grass	Min T	Max T	Rain	Sun	Wind	Mx Gust	from	Significant Weather
Glasgow, Bishopton @12.5km	0.0°C	0.3°C	5.1°C	15.3mm	0.9hr	14mph	24mph	060°	Snow 0400-0600
Salsburgh @28.9km	0.2°C	0.0°C	1.4°C	10.4mm		28mph	38mph	050°	N/A

Thu 05 Apr 2018	Grass	Min T	Max T	Rain	Sun	Wind	Mx Gust	from	Significant Weather
Glasgow, Bishopton @12.5km	-4.5°C	-2.0°C	10.3°C	1.2mm	7.8hr	13mph	26mph	240°	None
Salsburgh @28.9km	-7.6°C	-3.7°C	6.9°C	3.4mm		17mph	30mph	260°	N/A

Fri 06 Apr 2018	Grass	Min T	Max T	Rain	Sun	Wind	Mx Gust	from	Significant Weather
Glasgow, Bishopton @12.5km	2.7°C	4.2°C	10.9°C	3.0mm	0.1hr	17mph	31mph	170°	None
Salsburgh @28.9km	1.6°C	1.4°C	8.6°C	0.6mm		29mph	41mph	190°	N/A

Sample