



# Glass Technology Services

## Expert Witness, Product Analysis and Assessment Services

Glass Technology Services provide a range of specialist support to companies, insurers, loss adjusters, trading standards, police authorities and law firms who require expert advice on the use of glass, product standards and failures.

An independent glass laboratory and consultancy - accredited to ISO 9001, 14001 and 17025 quality standards and unrivalled in the UK for their glass expertise - GTS provides a range of services conducted by a dedicated team of scientists encompassing glass manufacture, processing, material sciences, chemistry, physics and engineering disciplines.

Two full-time consultants, who lead teams within the laboratory, can provide independent advice, expert witness statements and court testimony to cover the specialist competencies required where a glass product comes under question or has been involved in a crime.

Experienced in dealing with a range of disputes and Bond Solon trained in expert witness report writing, court representation and cross examination, they can support your organisation throughout the process should a product or installation come under question - or escalate to legal action.

### Legal Support Services

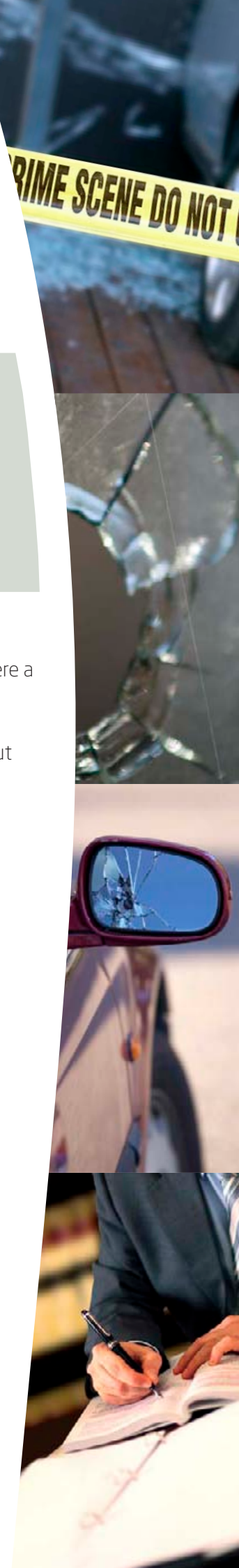
- Expert witness reports;
- Oral court representation and cross-examination of expert witness findings;
- Inspection and testing;
- Review and comment on reports and evidence;
- Research and literature studies;
- Advice and consultation;
- Criminal and civil cases.

### Product Types Include

- Glass packaging - containers and closures for foods and beverages;
- Glass and glazing - architecture, buildings and vehicles;
- Pharmaceutical, medical and laboratory glassware;
- Health and beauty products - perfumes, dispensers, containers;
- Home wares - kitchen, cookware, tableware, flasks, cafetieres and heat-resistance vessels;
- Interiors - furniture, features mirrors, lighting, fixtures, shower screens and interior accessories.

### Technical Support Services

- Failure and fracture analysis;
- Fragment and foreign body analysis;
- Product conformity assessment;
- Fitness-for-purpose assessment;
- Quality assessment;
- Chemical durability and food-contact assessment;
- Manufacturing defects;
- Damage investigation;
- Forensic examination and identification of glass from crime scenes;
- Glass production assessments;
- Review of assembly and installation of architectural glass and glazing;
- Environmental assessment and the impact of the environment on the glass product.





**Dr Nicholas Kirk** PhD BEng CEng CEnv FIMMM  
Technical Director

Nick has over 20 years' experience in the glass sector - including 6 years in furnace design and construction. He holds extensive experience and knowledge of glass products and applications including glass packaging, glazing, fibre insulation, continuous fibre and technical glasses.

Nick is an independent glass expert and expert witness dealing with glass manufacturing issues of all type of glass. He holds a PhD in materials engineering and a Bachelor of Engineering in materials design and materials engineering, is a chartered engineer (CEng), a chartered environmentalist (CEnv) and fellow of the Institute Materials, Minerals and Mining (FIMMM).



**Matthew Roberts** BEng (hons) MSc  
Principal Glass Technologist - Product Performance

Matt is directly responsible for managing diagnostic services relating to glass products, materials and process quality, including physical strength assessment, fitness-for-purpose testing, product conformity testing, foreign fragment identification, troubleshooting and on-site investigations. He holds a Master of Science in glass technology and management and Bachelor of Engineering in mechanical engineering.

Matt is an independent glass expert and expert witness dealing with glass manufacturing issues and breakages of all type of glass. He has extensive experience in glass manufacture, packaging closures, the mechanical performance of glass and glass failure investigation.

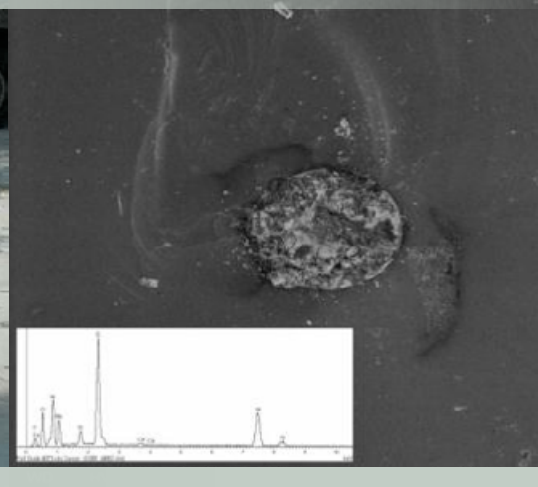
### Typical Scenarios Include

- Product failures in use – investigation of suitability, misuse, product quality and conformance;
- Forensic comparison of glass retrieved from a crime scene and that found on a suspect;
- Failure of architectural glass or glazing;
- Disputes between supplier/installer and consumer;
- Investigation of glass surface damage from contaminants, products or pollutants;
- Packaging and closure defect claims;
- Personal injury claims;
- Manufacturer disputes.

*Overall it seemed to me that that the investigations conducted by Mr Roberts were logical, well thought-out, informative and relevant; were executed in a methodical and well-structured way and were reported upon in a way which allowed for objective assessment of their outcomes. I had a similarly positive impression of Mr Roberts when he gave evidence which I thought he did in a straightforward and sensible manner. Overall I thought him an impressive witness and I found his evidence to be credible and in the main reliable.*

Extract from judgement of Sheriff D Scullion  
MacMillan v De Vere Group Limited and Wm Morrison Supermarkets plc (2012)

*Full curriculum vitae, terms and conditions and quotations are available on request.*



## glass technology services

E-mail: [enquiries@glass-ts.com](mailto:enquiries@glass-ts.com) | Tel: +44 (0) 114 290 1801 | Fax: +44 (0) 114 290 1851 | [www.glass-ts.com](http://www.glass-ts.com)  
Glass Technology Services Ltd | 9 Churchill Way, Chapeltown, Sheffield, S35 2PY, United Kingdom.